

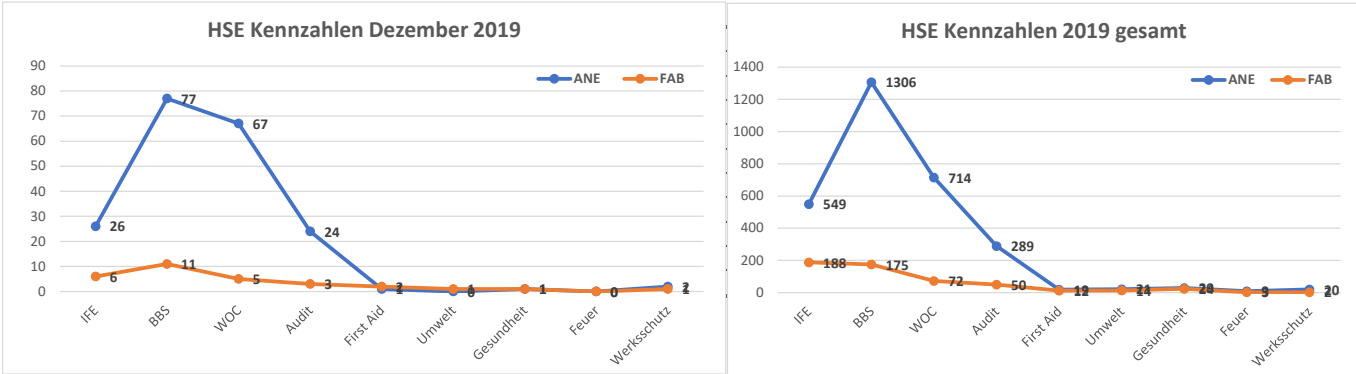


HSE - Report

Dezember 2019

Health, Safety, Security and Environment

1.) HSE Kennzahlen



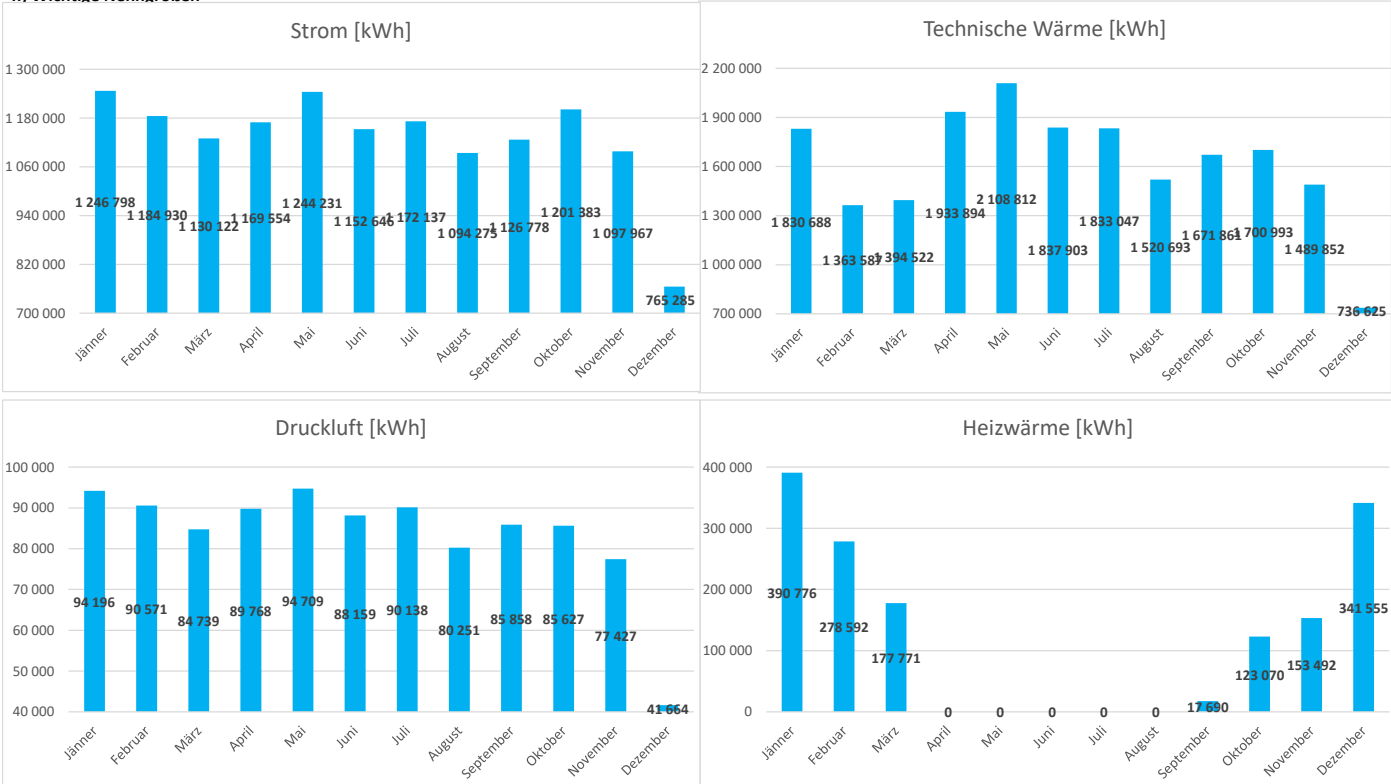
2.) Unfälle

	Jänner	Februar	März	April	Mai	Juni	Juli	August	September	Oktober	November	Dezember	gesamt
First Aid (FA)	3	3	0	0	2	3	3	4	3	1	4	3	29
Lost Work Day (LWD)	0	0	2	0	0	0	0	0	0	0	0	0	2
Restricted Work Day (RWD)	0	0	0	0	0	0	0	0	0	0	0	0	0
Medical Treatment (MT)	0	0	0	0	0	0	0	0	0	0	0	0	0

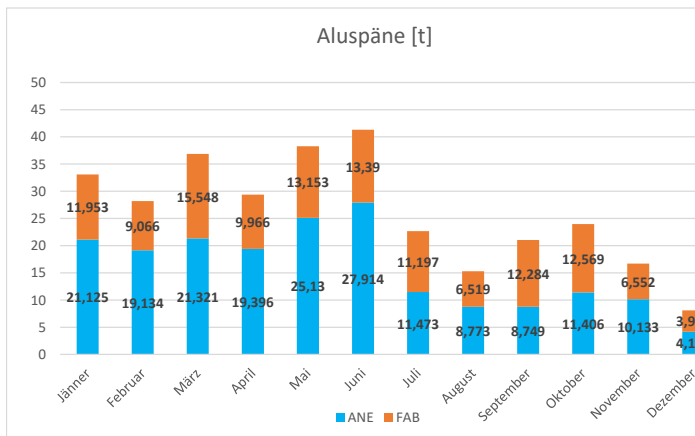
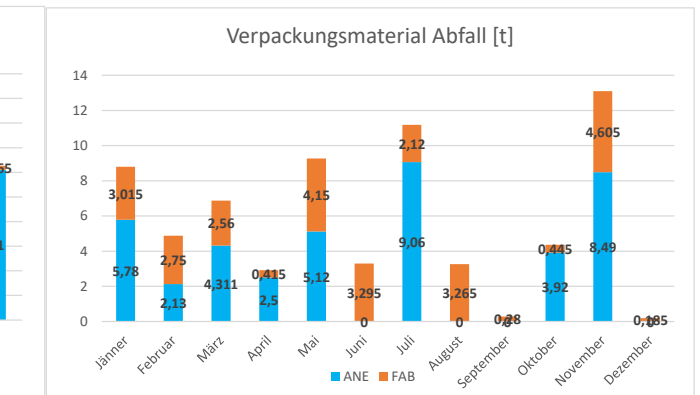
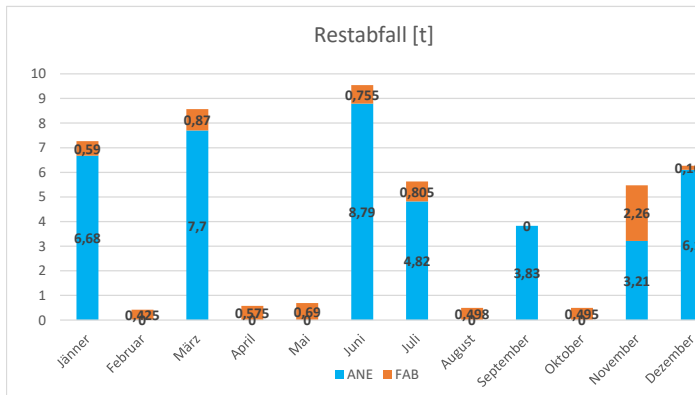
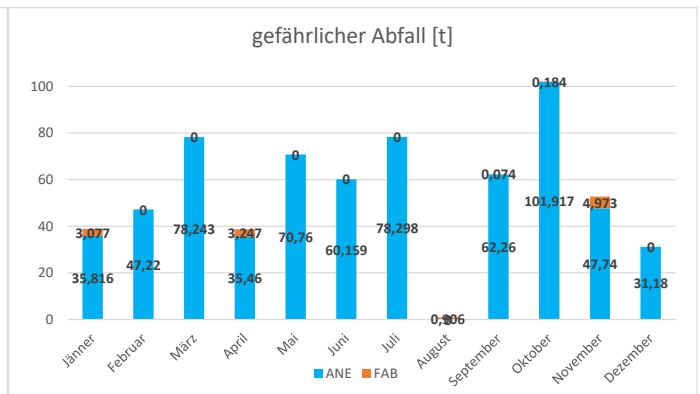
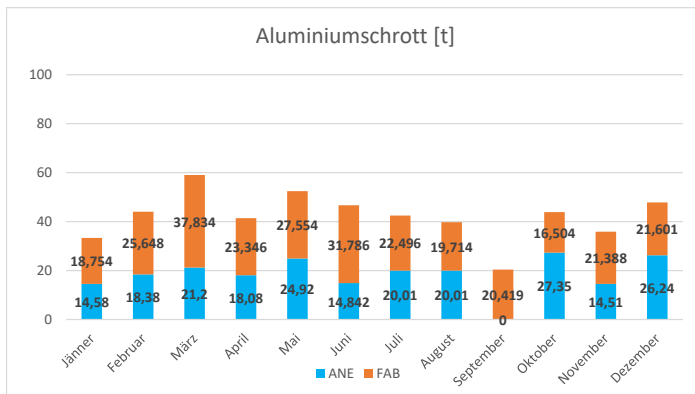
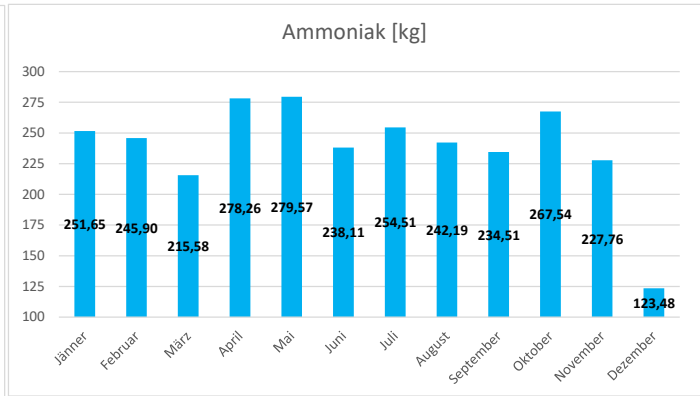
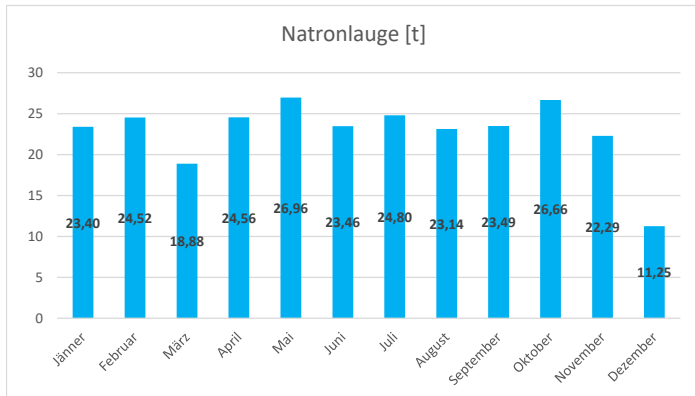
3.) Sicher gearbeitete Tage

ANE/FAB	p16	p18	p22	log/vs	at	admin	wzt/wzs	fab
	277	284	432	6430	959	5174	8193	694

4.) Wichtige Nenngrößen



Health, Safety, Security and Environment





HSE - Report

Dezember 2019

Health, Safety, Security and Environment

Verbrauch pro produzierte Tonne

	Januar	Februar	März	April	Mai	Juni	Juli	August	September	Oktober	November	Dezember	
Technische Wärme [kWh/t]	457	370	408	501	514	509	503	464	466	437	444	453	461
Strom [kWh/t]	311	322	331	303	303	319	322	334	314	309	327	471	330
Natronlauge [kg/t]	5,841	6,660	5,521	6,366	6,570	6,502	6,801	7,062	6,545	6,851	6,639	6,925	6,52
Aluschrott ANE [kg/t]	3,640	4,993	6,201	4,686	6,074	4,114	5,489	6,108	0,000	7,027	4,322	16,148	5,73
Aluschrott FAB [kg/t]	4,681	6,968	11,066	6,051	6,716	8,810	6,171	6,017	5,688	4,240	6,370	13,293	7,17
Aluspäne ANE [kg/t]	5,273	5,198	6,236	5,027	6,125	7,737	3,147	2,678	2,437	2,930	3,018	2,559	4,36
Aluspäne FAB [kg/t]	2,984	2,463	4,548	2,583	3,206	3,711	3,071	1,990	3,422	3,229	1,951	2,418	2,96
Verpackungsmaterial ANE [kg/t]	1,443	0,579	1,261	0,648	1,248	0,000	2,485	0,000	0,000	1,007	2,529	0,000	0,93
Verpackungsmaterial FAB [kg/t]	0,753	0,747	0,749	0,108	1,011	0,913	0,582	0,997	0,078	0,114	1,372	0,114	0,63

