



HYDRO

Note that minutes are paraphrased to an extent and may not match actual statements exactly.




Project	Hydro Kurri Kurri site redevelopment project	From	Alysia Norris
Subject	Community Consultative Committee Meeting	Tel	1800 066 243
Venue/Date/Time	Thursday 21 June 2018 Hydro Aluminium 6.01pm – 6.47pm	Job No	2218982
Copies to	All committee members		
Attendees	Mr Andrew Walker – Hydro Kurri Kurri Project Manager (AW) Mr Richard Brown – Managing Director, Hydro Kurri Kurri (RB) Mrs Kerry Hallett – Hunter BEC (KH) Mr Kerry McNaughton – Environmental Officer, Hydro Kurri Kurri (KM) Clr Darrin Gray – Cessnock City Council (DG) Mr Ian Shillington – Cessnock City Council (attending in place of Martin Johnson and Gareth Curtis) Mr Michael Ulph – CRG Chair, GHD (MU) Mr Rod Doherty – Kurri Kurri Business Chamber (RD) Clr Robert Aitchison – Maitland City Council (RA) Mr Allan Gray – Community representative - Retired Mineworkers (AG) Mr Bill Metcalfe – Community representative (BM) Mr Brad Wood – Community representative (BW) Alysia Norris – GHD (Minutes)		
Guests/observers	Ms Fiona Robinson – Ramboll (FR)		
Apologies	Mr Toby Thomas – Community representative, Towns with Heart (TT)		
Not present	Mr Gareth Curtis – Cessnock City Council (alternating with Martin Johnston) Mr Martin Johnston - Cessnock City Council Ms Tara Dever – CEO Mindaribba Local Aboriginal Land Council Mr Mark Roser – Strategic Planner, Maitland City Council (MR) Ms Debra Ford - Community representative (DF)		



Table of Contents

1	Welcome and Acknowledgement of Country	3
2	Meeting agenda	4
3	Welcome and meeting opening	4
4	Last meeting minutes	4
5	Project update	5
6	Early works remediation packages	14
7	Major project application update	18
8	General business and CRG questions and answers	20
9	Any other business	23
10	Meeting close	23

Notes	Action
<p>1 Welcome and Acknowledgement of Country</p> <p>Meeting commenced at 6.01pm</p> <p>Michael Ulph (Chair)</p> <p>Acknowledgement of country.</p> <p>Intro of people at the table.</p> <p>Ian Shillington representing Martin and Gareth from Cessnock City Council.</p> <p>Fiona Robinson representing Ramboll.</p> <p>Alysia Norris from GHD taking minutes.</p>	 <p>The banner features the Hydro Aluminium Kurri Kurri logo and the ReGrowth Kurri Kurri Project logo. It includes the text: 'Hydro Aluminium Kurri Kurri – ReGrowth Kurri Kurri Project', 'Community Reference Group Meeting #27', 'June 2018', and 'CREATING PROSPEROUS FUTURES' with an image of a small green plant growing from soil.</p>

Notes	Action
-------	--------

2 Meeting agenda

- Welcome and meeting opening
- Apologies
- Declaration of pecuniary interests
- Acceptance of minutes from the last meeting
- Project update
- Early Works Remediation Packages
- General business and CRG questions and answers
- Next meeting and meeting close

Agenda

1. Project Update – AW & RB
2. Early works remediation - FR
3. Mural Update - TT
4. CRG Q&A – CRG Members
5. General business

CREATING
PROSPEROUS
FUTURES



3 Welcome and meeting opening

Michael Ulph welcomed the committee and notes apologies.

Michael asked those present to declare any pecuniary interests.

None besides paid staff from GHD and Hydro.

4 Last meeting minutes

MU: Has anyone got any issue with the minutes?

RD: Just 29 pages, that was all.

MU: Well, I could have made the pictures smaller, but I thought there's some detail in some of those pictures, and when they go on the website I'd like people to be able to see what's in them, and so, yeah.

KH: But there were 40-odd pages at one point.

MU: Oh at one point. So the ones that have got large text, I've shrunk those down. OK, can I have somebody move that they're a true and correct record?


AW: moved. **DG** seconded.

5 Project update

MU: I'll pass over to Andrew for a project update. Thanks Andrew.

AW: We've been continuing with demolition. CMA Contracting has now demolished most of Line 2 South. The crane maintenance bay here and they've also started demolishing the north bath station. There's a lot of work going on in Line 1 to prepare for demolition, some asbestos removal is happening at the moment which I'll go into. They've now been on site just over 12 months, they started in May last year.

Stage 1 Demolition Progress – CMA Contracting



- Contract awarded 13/4/2017.
- Site meeting to discuss the demolition methodology and Demolition Risk Assessment Workshop (DRAW) process with SafeWork NSW on 1/5/2017.
- DRAW # 1 – site establishment held on 8/5/2017.
- Handover of western part of the site to CMA as PC occurred on 16/5/2017.
- Meeting held with Cessnock City Council staff on 17/5/2017.
- Management plans submitted to CCC for approval on 26/5/2017.
- DRAW # 2 – planning for the demolition of first structures held on 7/6/2017.
- Management plans approved on 26/6/2017 and demolition commenced thereafter.
- DRAW # 3 Structures between Line 1 and 2 held on 7/8/17
- DRAW # 4 Potline 3 Demolition held on 14/11/2017
- DRAW # 5 Casting Demolition held 22/2/18

White boxes indicate areas which have been demolished.

Last meeting we talked about cleaning the cranes down, so this is just some photos showing how we are doing it, using an EWP (elevated work platform) to guide up the fire hose, spraying the top of the girders of the cranes to remove any dust or alumina.

This photo was taken in April showing the last half a dozen bays being demolished, at the south end of Line 2.

This is the north end of Line 2 in May and they've finished at this stage, just demolished column 56, and we're planning to do a final separation of column 51-52 area. For the last two months, CMA has mainly been focusing on sorting scrap, pulverising concrete and backfilling voids in this area south of Pot Line 2 and 3, just tidying up the site.

They've also been doing substation work, so removing transformers, removing the concrete plinths under the

Stage 1 Demolition Progress



Line 2 PTA Crane wash down – April 2018

Stage 1 Demolition Progress



Line 2 South – demolition of last few bays in April 2018

Stage 1 Demolition Progress



Demolition to column 56 at northern end of Line 2 in May 2018

transformers, and then digging out the soil. They've been focusing on areas where there's visible oil stains and Ramboll has been assisting by taking samples of those oil-stained soils and we're checking them for PCBs because some of the transformers did contain PCBs.

This particular one, 3B south didn't have any PCBs in it but it had some hydrocarbons, non-PCB transformer oil had leaked into the ground. So, once we dig down we take samples of that material, and it's analysed. If it comes back as a pass, that's OK - we've gone deep enough. If it's a fail, it's still too high in hydrocarbon or PCBs, we have to dig down further, usually in about 100mm increments. This particular one was fine, it passed, but some other substations we've had to go back two and three times to keep digging out enough material until we're down below the criteria which is seven PPM (parts per million) for PCBs. How much is it for hydrocarbons?

Stage 1 Demolition Progress



Concrete plinths removed from underneath transformers at 3BS substation. Anything with oil staining will be checked for PCB contamination

FR: 1,000 [PPM].

AW: Also the concrete plinths under the ones that are oil-stained, we're putting them aside and we're testing those for hydrocarbons and PCBs as well.

This is a photo of Craig from Ramboll taking samples. We've also been backfilling voids. That concrete that we're crushing, CMA are passing an electromagnet over it and removing the reinforcing steel which you can see there.

Stage 1 Demolition Progress



May 2018 - CMA have spent most of May & June cleaning and sorting in L2/3S area

Stage 1 Demolition Progress



Removal of contaminated/oil stained soils from 3BS substation. Anything with oil staining is checked for PCB's.

Stage 1 Demolition Progress



Validation sampling at 3BS substation by Ramboll in May 2018

Stage 1 Demolition Progress



Removal of reo from crushed concrete by electromagnet - May 2018. Concrete to be used for backfill material.

And this is a dump station at the south end of Line 2, 17B south. This is just a few photos of that being backfilled with a combination of crushed concrete and soils from the clay borrow pit that had been previously sampled as being clear for reuse on site for filling voids. By combining concrete with soil we get better compaction.

This particular substation was at the north side of Casting, this was an interesting one. Although the two transformers up here were from the last set of oil analysis results were PCB-free, one of our electrical engineers who has a lot of experience onsite, he alerted us of the fact that transformer TL12, the footprint of that transformer he said will be high in PCBs because the first twelve transformers on site were replaced in about 1985. When we did remove the transformer and checked underneath it we did find high levels of PCBs and we had to go back two and three times to get all the soil out. So that's just an example of someone in our team who has good site knowledge, because you can't just go off the last set of results. We would have picked it up anyway but it was good that he is in the team and is aware of these things.

Stage 1 Demolition Progress



4A north substation at Casting – TL12 transformer footprint had high PCB levels from pre-1985 unit

This is the soil we've been stockpiling, PCB-contaminated soil, up in 77A which is the old remelt building and we're currently talking to a contractor that can help us dispose of that soil down at Kemps Creek. Because it contains PCBs, it can't go into our cell, that's governed by a special chemical control order, so it will have to go to Kemps Creek.

CMA have also been sorting all the crossover busbar, which is at the south end of Lines 2 and 3, which is connected one bank of 60 pots to the other bank of 60 pots. These are long lengths of

Stage 1 Demolition Progress



17BS alumina dump station void filling – May 2018

Stage 1 Demolition Progress



17BS alumina dump station void filling – May 2018

Stage 1 Demolition Progress



PCB-contaminated soils in 77A awaiting off-site disposal.

busbar so they had to be cut using oxy lancing and then straightened.

Stage 1 Demolition Progress



Line 2 and 3 crossover busbar ready to be cut to length and straightened

MU: Is it steel or aluminium?

AW: Aluminium, very thick aluminium, 200mm thick. Also, up in 77A, the old remelt building, we were aware that there were voids for the old furnace, the old crucible pit, and the pits where the scrap buckets were held. We had some records from back then, memos and things, and we believed it was reinforced slabs and clean soil that was used but we weren't sure. In order to get validation of the site, we had to saw-cut those slabs and then actually digging out and checking what was in there and we did find reinforced slabs and clean soil. Ramboll has sampled the soil and had it analysed and it was fine. After doing the first one we've just been core drilling the others and getting soil and concrete samples analysed and it all looks fine, so that can be signed off as part of the site validation.

In Pot Line 1, in order to get ready for demolition, there's still a lot of asbestos to be removed. You're probably aware from our earlier meetings there's been a lot of asbestos removal already done in Line 1. But there is some conduits that are actually underneath the slabs that we are now removing.

Stage 1 Demolition Progress



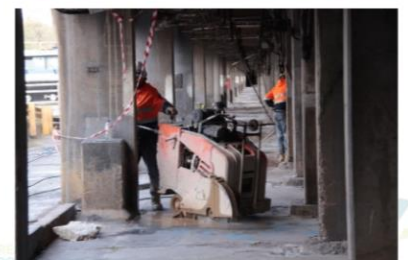
Saw cutting of slab in building 77A (old Remelt facility) to determine content of voids (old melting furnace pit, crucible pit and three scrap bucket pits).

Stage 1 Demolition Progress



Following saw cutting of Line 1 basement slab

Stage 1 Demolition Progress



Saw cutting concrete slab above each asbestos conduit

Stage 1 Demolition Progress



Location and mark out of asbestos conduits in Potline 1

CMA has been using a service locator to pinpoint where they are, which is that red line, and then they marked out the floor for the concrete cutting crew, and they've been saw cutting. So every pot - there's 120 pots in Line 1 - every pot has one of these conduits, so we had to saw-cut all the slabs. This one's after the saw cutting. We also had expansion joints every six bays in the building, so here we've cut in the side of the expansion joint up to this column. There's another cut that you can't see but they'll have to jackhammer around there because there's asbestos around that column.

This photo here: they're using a little excavator with a hammer and they're just hammering up the concrete, just this bit. They haven't done these ones yet because they're a bit more tricky. And removing that concrete, and then removing the soil down to about 100mm above the conduit, and then they hand-dig hand down to the conduit and around it. They don't use the machine because they don't want to break the conduit.

MU: It's like unscrambling an omelette, isn't it?

AW: Oh yeah. So this is one of those asbestos conduits. They're still in reasonably good condition but they're in sections and they're joined with what appears to be bitumen. Most of it is coming out OK but sometimes they do break at the joints. The conduit actually comes up in this foundation for the pot column.

They were used for thermocouples and put into the voltage signal for each pot, back to the pot room process-controlled computer system. The conduit ran from here out to the building column into a plinth. Here they're wrapping - sorry in this photo he's using a little kanga hammer and jackhammer on the concrete either side,

Stage 1 Demolition Progress



Machine digging of trenches above conduits in Line 1

Stage 1 Demolition Progress



Jack hammering of concrete either side of asbestos conduit by ACM removal crew

Stage 1 Demolition Progress



Asbestos conduit in Line 1 following machine and hand digging

being careful not to break the conduit which is painted in pink paint.

Here the guys are just wrapping the conduit in plastic and they will be stored down in the carbon plant and eventually they will go into the new containment cell.

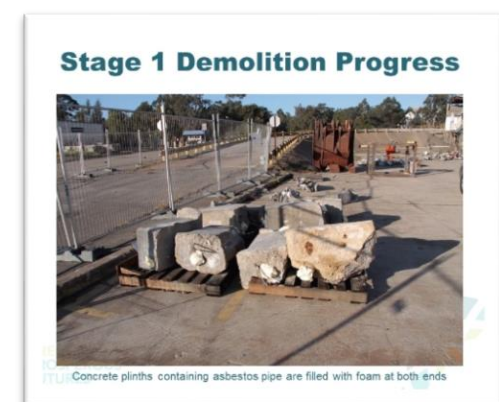
These are the plinths at the other end of the conduit. They still have the asbestos pipe inside them but we filled each end with foam so there was no chance of any fibres escaping. And they're getting being put on pallets and they're also being stored down in the carbon plant and they will also go into the cell. It's not worth trying to recover the concrete. It's better to put them into the cell.

We have had a couple of failures, so we've gone through after removing the conduit. Ramboll take a soil sample – I think we've had four of five fails - so, then CMA have to go back and hand dig another 100mm below the level that they've previously reached and that soil's been sorted into these bags and also taken to the carbon plant and then Ramboll take another set of samples and then hopefully that will come back negative for asbestos.

It's quite an involved job and CMA are trying to get far enough ahead so they can then start the demolition, the demolition work front to be 100, 200m behind, south of the asbestos crew.



This is all the busbar from Lines 2 and 3 which has all been straightened now, and neatly stacked so that's ready to be scrapped. We've currently got a tender out to the marketplace for that material to go offsite. There's about, in total, 4000 tonnes, of what I call café busbar, which is all the busbar below the working



floor of the pot room between the three pot lines and the Line 1 will be coming out over the next six months.

Down in the switchyard, we've now finished removing all the high voltage aerials to the rectifiers, and we've got Downer onsite currently disconnecting all the low voltage supplies to those rectifiers. We're currently out to tender to scrap all 14 of the Fuji rectifiers, which are the older rectifiers between 40 and 50 years old. And that scope will be to drain the oil, which can be recycled and reused, and then scrapping the rectifiers. A combination of some onsite demolition and probably some offsite that will be taken to - whoever is the successful contractor - it will be taken to their premises for final removal of the transformer coils and iron core and so on.

In the cast house, we've had some delays with getting the contractors in but next week they're about to drain all the hydraulic oil and unbolt all the cylinders and the rams under the DC pits and one other pit which is a spacer storage rig.

Stage 1 Demolition Progress



HV aerials are now all disconnected from the rectifiers. Now working on disconnection of all low voltage connections in preparation for oil draining and scrapping of all Fuji rectifiers.

Stage 1 Demolition Progress



DC pits - hydraulic oil to be drained and lines plugged to main hydraulic cylinders of DC1 and DC3 pits by the end of June prior to handover to CMA for demolition

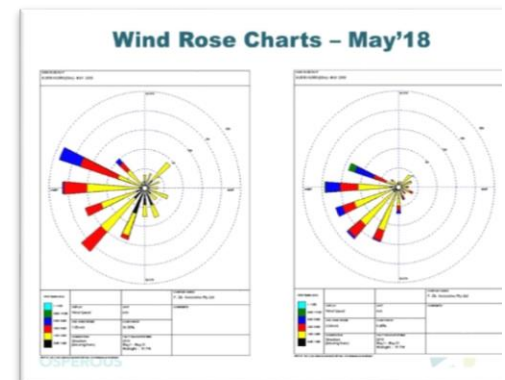
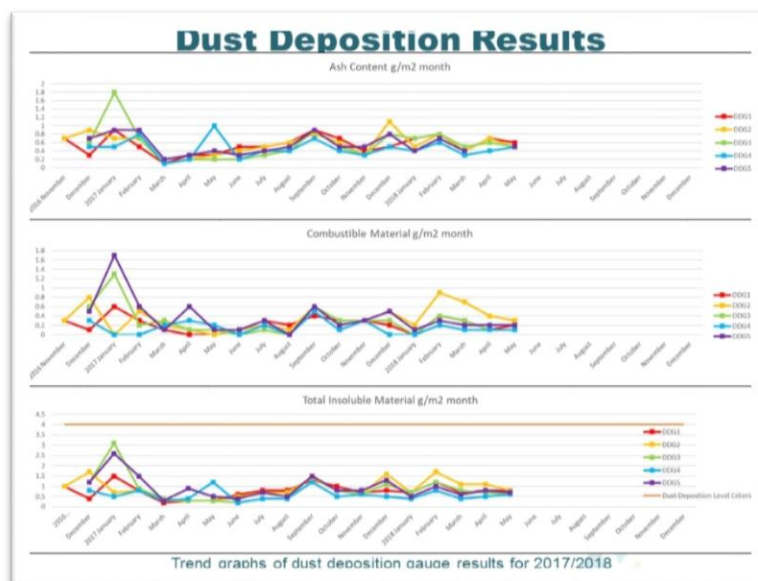
Ledge Bath Shipments



6,080T of ledge bath & anode cover material was on site - 2,048T of ledge bath has now left site. About 1,350T still remains. A trial to recycle the remaining 2,700T of anode cover material was not successful.

They've also been moving more of the ledge bath. Now of the 6,000 tonnes, we've moved 2,048 tonnes of ledge bath. There's still about 1,350 tonnes of that material remaining. We did a trial with a smelter in China, with the anode cover material that wasn't successful, so 2700 tonnes of anode cover material, it's looking like it may not be possible to recycle that.

We've also got the latest dust deposition results. These are the wind rose charts for May. So you can see the strongest winds were westerlies of course, because we are in winter. And this is the trend charts for some ash, combustible material and total insoluble and it's all trending pretty consistently below the limit of four sitting around 0.521. This is where the sampling points are, so westerly winds, you'd expect, if there was an issue, you'd expect to see high results from 1 and 2 but they're all pretty low.



SLIDE MISSING – SAMPLING POINTS

We've also now received approval for Stage 2 demolition from Cessnock Council, on 9 May. CMA are now updating their management plans to reflect the conditions of consent from council and the EPA and we'll be submitting those revised management plans through to council in the next few weeks. CMA plan to start those Stage 2 works in Quarter 3.

Approval of Stage 2 Demolition

- Stage 2 demolition approved by Cessnock City Council on 9th May 2018.
- CMA are now updating their management plans to reflect the conditions of consent for submission to Council for review.
- Planning to commence Stage 2 works in Q3'2018.

Procurement Plan – Remediation Contract

- Procurement analysis currently being finalised.
- EOI issued on 22/1/2018 and closed on 28/2/18.
- Currently evaluating EOI submissions and meeting with shortlisted candidates.
- **Supplier qualification audits for the shortlisted companies (June/July 2018).**
- Expecting to have a civil / earthworks / remediation company as the Principal Contractor with a specialist lining installer as a subcontractor to the PC.
- Target date to go out to tender is in Q4'18 (pending EIS approval date and approval by EPA's technical review of the cell design).
- Tender documents will include – detailed design docs (including drawings, tech spec, CQA plan & others), draft AS2124 construction contract with amendments plus various project-related documents (eg. EIS, conditions of consent from DoPE/EPA and various Hydro management plans – WHS, EMP, asbestos management plan, etc).
- Lining materials – HDPE liner is a long lead item and only the pre-qualified suppliers from the liner testing can be used. Decision to be made on Principal-supplied or Contractor-supplied item (leaning towards Contractor-supplied based on advice from the cell designer).
- CQA contract to be awarded.
- Expected award date is Q1'19 pending authority approvals and Hydro decision gate approval process.
- **Planning to start some of the smaller off-site remediation packages as early works in 2018 and stockpile the waste at a suitable location on site.**

CREATING PROSPEROUS
AND SUSTAINABLE

We're also going through the procurement process for the main remediation contract, despite a long, drawn-out process in Hydro to select, especially for a contract of this size, to select the successful contractor.

We're currently doing supply qualification audits to shortlist for potential tenderers on the contract and those audits will be going on for the rest of this month and all of July. We're hoping we can get approval in Quarter four, so we can go out for tender as soon as we get the approval. It's looking more likely Quarter 1 next year before we award the contract. But we are planning to do some small offsite remediation packages as early works and Fiona's here to talk about that, which is the next slide. So any questions of me before I hand over to Fiona?

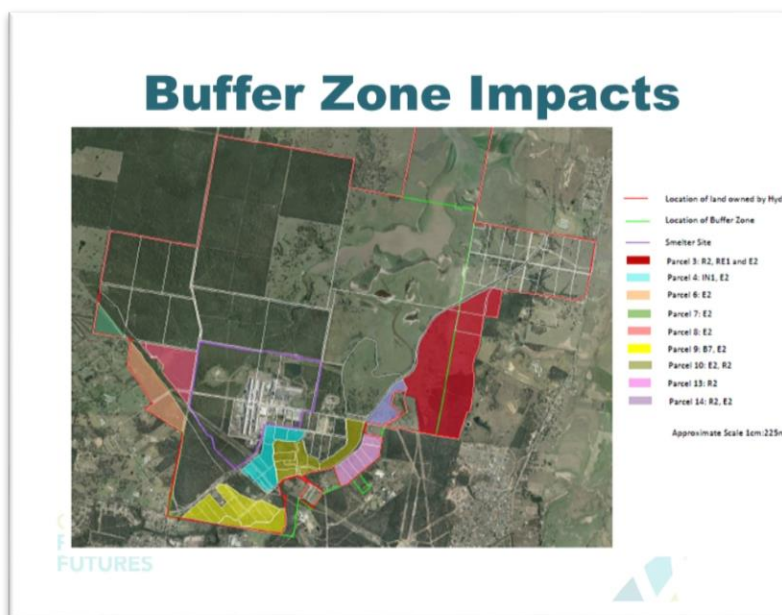
MU: Any questions on any of those slides or Andrew's comments so far?

None.

MU: You're off the hook, Andrew, for now. Fiona welcome.

6 Early works remediation packages

FR: OK I've just put together a couple of slides to talk about these early works remediation, so this is remediation sites outside of the smelter footprint. The idea is to make that, or the remediation is, to make that land suitable for its use and contamination in the buffer zone is not related to the smelter activities. If you remember from the investigations that we've done so far, the aerial fall out of the smelter has not impacted on sites surrounding the smelter.



Most of the contamination that we're looking at is because of their use in the buffer zone, so farming use, mostly related to asbestos in poultry sheds and the demolition of those sheds or houses with asbestos with poor demolition practices.

We've also got the former landfill which operated on Hart Rd, 60-70 years ago, and some illegally dumped waste. We've identified these areas through our site investigations which were some time ago, I think 2013-2014 was when we undertook those studies, and we've prepared a remediation plan that details how we're going to remediate those sites and we're now at the point where we're looking at some contracts to do that.

The area that we're looking at is everywhere outside of that purple footprint, so these sites. I haven't really got a slide that shows where the impacts are, but just essentially small areas of impact through most of these properties here where there was high residential use, a couple of illegal dumpings on that site and

Early Works Remediation - Objectives of Remediation

- Making the site suitable for the proposed use
- Contamination in the buffer zone is not from the smelter activities
 - Historical use as poultry farming
 - Houses with bonded asbestos construction
 - Former Cessnock Landfill
 - Illegally dumped waste
- Completed detailed Phase 1 and Phase 2 ESAs
- Prepare remediation plan

CREATING
SUSTAINABLE FUTURE

through this area here. And this, in here, is the old municipal landfill.

And I've just got a couple of photos so you can see that's an example of the site that I just mentioned where there was some dumped roof sheeting and we've actually removed that now but it was some time ago and, because of the accessibility of that site to the public, before we finalise the validation report, we'll go and do another site walkover and just make sure there's nothing new on that property.

This is just another example. That's a house. This is Horton Rd and the Expressway, with some asbestos fragments on the surface of the property, probably just from old sheds and things or rubbish disposal that's occurred on the property in the past.



And this one is an example of where there was a house there that was demolished and we've got some asbestos including a bit of buried waste there that we've found when doing some test pits. That's just a couple of examples of what we're looking at, and here's some fragments of asbestos on the surface. Some of the remediation is just to go and pick this up and do a bit of a walkover and a dig under the surface and just confirm we've removed it all. Other parts have got some buried asbestos where we can see some fill's been placed and has asbestos in it and we'll actually remove that as part of the remediation works.

That's an example of illegal dumping and it's been removed from somewhere offsite and disposed on the property. Sometimes these are nicely stacked sheets of roof sheeting, corrugated roof sheeting, which is good. Sometimes it's been broken up and out in the bush so we'll go in, pick this up and validate the soil that



remains is free of asbestos and then we write that up basically as a validation report and that's the end.

Then we have the former municipal landfill which, actually I'll just show you that slide first. This is Hart Road. What's the name of that road?

KM: Government Road.

FR: Government Road, is it? Where you come down here?

KM: Yeah.



FR: And the Expressway's up here. So, there's an area there where the landfill was operated in the 40s, 50s, 60s and was kept on fire, by the look of it, throughout that period, which was not uncommon for landfills at the time. What's left through here is a combination of ash, glass bottles and the occasional metal item, but not much because a lot of metal was not, you know, disposed of at that time, and asbestos because there's materials through there as well, and sand really. So it's a bit of an area that was probably a low lying area and has been infilled so we've got a program to remove that.

That's a picture there of what it looks like, mostly sand and debris.

The remediation process is to bring the material back to site and we've got an area that's been put aside to temporarily stockpile all of this impacted material and we'll backfill the excavations with natural material that is clean and suitable for the use and then validate the site, write a report – we have our site auditor – he'll review that report and then prepare a statement that the site is suitable for its use under the zoning.

Former Municipal Landfill



Proposed Remediation

- Return material to site for temporary stockpiling
- Backfill excavations with natural material
- Achieve site auditor sign off that sites are suitable for the intended use
- Place temporarily stockpiled material in containment cell once available.
- Ensure that temporary stockpiled areas are uncontaminated

And then the temporary stockpiled material stays here on site. It's covered in that interim period and then when the containment cell is available it will be placed in the containment cell. Then we validate that where we've stockpiled it isn't impacted by the stockpiling process and, eventually, that's the end of the remediation. That's it, back to you Andrew. Any questions on that one?

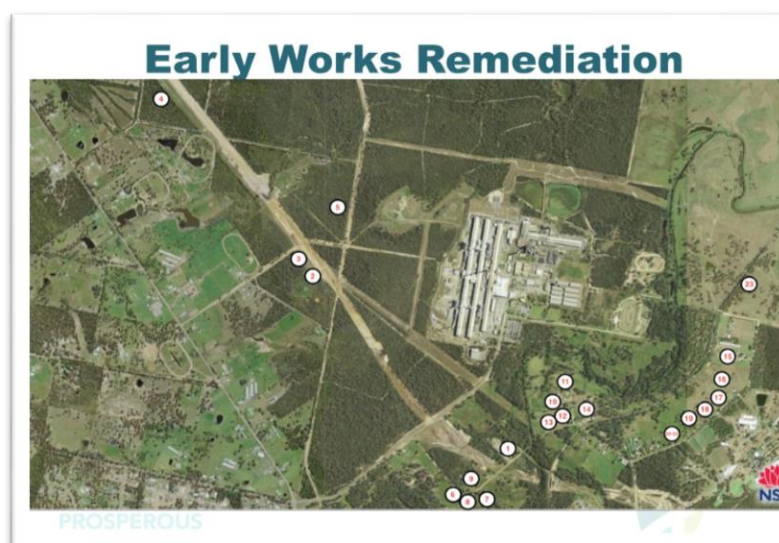
RB: I do, and just on timing. What's your expectations on timing for those works?

AW: Yeah, we're thinking it's going to take about 12 weeks all up.

RB: Commencing when?

AW: Commencing ... it's about to go to tender in the next two weeks and then there's a four-week tender period so, six weeks and then ... So, it's going to be around October. Like, September, October, November.

MU: So these are all areas that you've identified and you've mapped them and so on, and this tender is to go in and take them and place them ready for them to be put into the cell.



AW: I've actually got a photo of the scope, in the attachments. So that just shows all the locations that Fiona's talking about. The stockpiling area is actually going to be here, on the south side of the SPL sheds, so we've got to remove some trees and it's going to be stockpiled there, covered with clean soil and grass grown over it until the cell's ready.

7 Major project application update

RB: The major project application, we're currently in the process of finalising our response to the Submissions Report. We're still having a bit of dialogue with the EPA just to get their final comments and input into that. We've had the draft RTS report reviewed by the Department of Planning, and they've provided a number of comments which have required us to go back and do a couple of things. There's a couple of reports that we needed to update and to now, I guess, finalise a few different studies.

As an example, the traffic impacts on Hart Rd on the interchange - they wanted us to update that based on the truck movements coming in and offsite. We've commissioned a small traffic impact assessment for that, and that's basically all but finished. And then with that, those different reports and studies completed in the next few weeks, we should be aiming to get our draft report completed and formally submitted to the department within the next couple of months. So that then, fingers crossed, basically is it for us. Then the department goes away and makes their recommendation and goes through the formal determination process from there.

It could be that they choose to exhibit the response to submissions which gives government agencies and the public another opportunity to review the different amendments to the project. We're not certain of that, but that's something that they're considering. But then it's in their hands essentially.

MU: And for those that weren't here last time, the reason the minutes are 30 pages was because Shaun, also from Ramboll, spoke about their Response to Submissions Report last time and there's quite an extensive summary in there if you're interested.

Environmental Impact Assessment for Stage 2 Demolition / Remediation DA (SSD6666)

- Response to Submissions (RtS) Report
 - Finalising discussions with EPA
 - Updating / finalising various studies and reports after feedback from DoPE review of draft RtS report
 - Aiming for 'formal' submission within the next 2 months

FOR STAGE

http://majorprojects.planning.nsw.gov.au/index.pl?action=view_job&job_id=6666

Spent Pot Lining Recycling

• Commenced 1 Recycling Contract

- Material processing to commence start end of June (delays in 'paperwork' from recycler)

• Phase 2 investigations are ongoing with an number of additional options. This includes:

- Site visits for the purpose for HSE / CSR audits
- Intermediate and final product testing (to validate claims of non-hazardous material, or otherwise)
- Validation of capacity claims
- Commercial negotiations
- Confirmation of approval from NSW and Commonwealth authorities for proposed solution

RB: SPL recycling ... changes in this slide are in red. Last meeting we anticipated material recycling would have commenced by the beginning of this month. That hasn't happened yet. There's been some delays from the recycler in preparing their, I'll call it paperwork there, but these are things like their safety management plan, their job safety risk assessments, getting their people inducted and various things. They've been a bit tardy on that. That has now all been completed. Our expectation is that material will start moving offsite next week.

KH: Is that onshore?

RB: Yes, that's onshore. There are still investigations going on for SPL, so that's not the end of it. We've got other options that we're continuing to try and get a range of different options for recycling that material so we'll continue to look at solutions for that.

And the changes for this slide are in red. So just on that, I think I've been saying every two months now that we're close. And guess what, we're close.

DG: Are we closer?

RB: In this case we're weeks not months, so it's very close. It's complicated, there's lots of moving parts and there's lawyers involved, so excuse me to all the lawyers in the room. They make it very difficult, they're essential but they make it difficult. Looking after our best interests, they are.

So yes, that's it. Next month, I have to bring along some news and some people, so next meeting.

MU: Next meeting. August. Any questions of Andrew or Richard or Fiona that have come up as a result of these discussions?

RD: The next bit is?

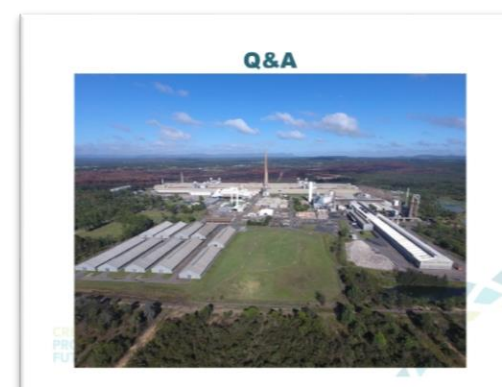
MU: The next bit after that is the General Business, and from CRG members to bring up things that might have been asked of them somewhere.

AG: My only comment, Richard, it looks like mate's been in the paper trying to get the spine road through for you.

RB: It's very kind of him, I agree. For those that don't know what Allan's referring to, there was an article in the *Mercury*, I think, and then reprinted in the *Herald*.

RD: Economic Development Manager for council, Maitland.

RB: A local developer was identifying potential flood-free access from Gillieston Heights to Heddon Greta through the Hydro site.





It's remarkably similar to one which has been proposed by us for a number of years.

RD: Which was used in the 2015 flood.

AG: I think if anybody wants to take the time to go back through our minutes, the first time he came on board was the week after it was in our minutes.

MU: Yes, so any General Business? Rod?

8 General business and CRG questions and answers

RD: Yeah, I've got a few things. There's a YouTube clip now, is that up on the website? Of the demolition?

MU: So what we do after each meeting, is we assemble the slides that are about the demolition, we turn them into a YouTube clip. So, there's a YouTube channel for *Regrowth Kurri Kurri* and it's got the slides on it from the last, all the meetings.

RD: There's been a hiccup in the last couple of months about some photos appearing on Facebook. And we're the CRG group and we get these things, and in the last fortnight an ex-employee who has a closed Facebook page, who's a friend of mine, had aerial photographs of the demolition of the site. So I'm just wondering why a CRG person can't put a photograph up but someone out in the public can fly a drone over or a plane and take photographs of the place and put them up on Facebook.

RB: Well, I guess clearly we can't control what people post on Facebook.

RD: Well, we can. I've been controlled.

RW: Well I can't control other people. I guess the point you're trying to make Rod is that you would like to put some photos on Facebook, is that right?

RD: Well, part of our reason for being here is to communicate to our communities.

RB: That's right.

RD: And if we can't communicate to our communities, then what's the benefit of even being here?

RW: Yep, no that's fine. And we've got some photos that are on ... that are published through these minutes and through the YouTube channel. More than happy for you to put those on Facebook, that sort of thing.



MU: Or a link to the YouTube clip would be great, because people like looking at videos these days. That would be a really good one. I guess with another entity on board as principal contractor for the site for the demolition they've got ...

RB: Yes, that's my concern mainly is because ... because we've been putting up, I'm a bit nervous about promoting those, and I know that CMA have previously expressed some reluctance to it.

I guess if I really pushed hard I could probably get them to produce something. But they're not overly happy. And it's interesting, and I'm sorry to digress a little bit here, I know Andrew went to part of the audits that they've been doing for these expressions of interests, went to a site only yesterday and it was a very, very clear picture or clear message from the contractors that they weren't to take any photos or any footage because the contractor was basically "do not publish this information". "Don't publish it. We don't want our people on photos, on the internet, all this kind of stuff." Which is probably not as strongly worded like that with CMA, but it's probably a similar type of issue.

But everything we put on these minutes, and put up here, more than happy for you to put on, direct those Facebook pages or whatever you want to our YouTube channel and to the websites.

MU: Alright, thanks for that.

RB: The other thing too, Rod, I might say in the next, what Andrew, two months?

AW: Two months.

RB: It will be hard not to see it.

AW: It will be very hard not to see it.

RB: Because it'll be down front on the main road.

RD: You'll be able to see it from the Expressway.

RB: Yeah, pretty much. You'll just come and park and take a picnic lunch and watch what's going on.

MU: So in saying that, are you saying that's when we're expecting to see the big stacks come down?

RB: No, no, just Line 1.

AW: Yeah in two months' time, you'll start to see Line 1.

RB: Line 1, cast house, yeah everything that's basically right here.



AW: So if you parked on Hart Rd, you'll start to see a lot of the site. Even the south end now you can see across to the bush and west side of Line 3.

RD: I suppose another question is, are we getting any closer to a timeline for when those concrete stacks will come down?

RB: No, they're still scheduled for ... I can't tell you exactly, Andrew probably knows the top of his head. It's probably about a year from now.

AW: Yes. Sorry, it was later than that it was into 2020, but it's looking like it's going to come forward.

RB: We're looking to have some discussions with CMA about a bit of a different strategy on the demolition site which might bring those forward.

MU: So if you can let us know, soon as you know what season because we need to organise whether there will be ice creams or blankets with the chairs.

RD: And what hill.

MU: And what hill, yes,

RD: What hill we can watch it from.

MU: Yes what hill we can watch it from.

MU: I guess on the mural, Toby has been away overseas and come back. The mural is, for all intents and purposes, completed as a piece of artwork. We still have a little bit of work to do on the plaque, and Toby is looking to put some solar-powered lights on top but the time for the grand unveiling of the mural and plaque and so on is drawing near. So as soon as we can get organised with those final pieces, expect to see an invitation to come along and have cake.

KM: My maintenance guys are maintaining that immediate area for the duration that Hydro is here anyway.

RD: I've gone up there and noticed a bit of rubbish laying around.

KM: We've seeded the area too and as I said we'll keep it mown and tidy for the duration we're here.

MU: Well I was told by someone who would know, a local authority on the subject matter, that this is the best mural in Kurri Kurri, so that's pretty good. I think it's a pretty right, a pretty nice one as well. We look forward to seeing that.

9 Any other business

MU: Right, any other business before we close the meeting?

AW: The video.

MU: Yeah, we've got a video. The next meeting date 16th August.

Video played.

MU: Very good Andrew.

AW: That cleaning of the DC pits that you saw there, that was something that we used to do routinely, every four weeks. But DC1, for some reason, they didn't do it. There were bits of aluminium that used to sometimes leak out of the in-box at the start of the cast and they would collect at the bottom of the pit. So they'd just get vacuumed out with a king vac vacuum truck. We had to do that first to make it safe to access the facilities.

DG: What's the hours of operation for the jack hammers? That's seven til?

AW: With our approval for demolition it's 7 til 6 Monday to Friday and 7 til 1 on Saturday. No work on Sundays or public holidays.

DG: You can hear it. You know, it's winter, and the atmosphere this side of the hill, you can hear it.

AW: Yeah, in winter you get like that inversion layer and the noise carries.

DG: Yeah it's really audible.

MU: Alright. Well thank you very much. Thank you all for your attendance and we'll see you in two months' time.

10 Meeting close

Meeting closed: 6.47pm

Proposed date of following meetings:

Thursday 16 August 2018

Thursday 18 October 2018.