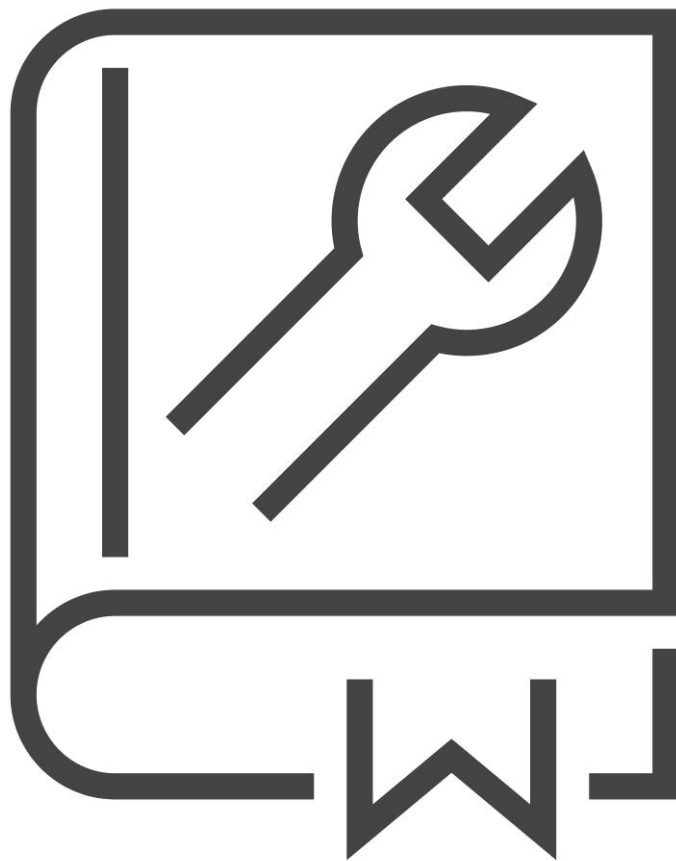




We are aluminium

Manual HiLo column with wedge



Introduction

The purpose of this manual is to provide instructions so that installers and service operatives can install and operate the Hydro HiLo column with wedge in a responsible and safe manner.

This user manual provides information about the HiLo column with wedge and any accessories. It is assumed that the installer / service technician has sufficient knowledge and experience to work on building construction and electrical installations. It is also assumed that the installer / service technician has the basic knowledge of safety and competence necessary to operate machines and tools required for the operation of the column.



ATTENTION:

- Read this manual carefully before operating the HiLo column with wedge.
- Always operate the column as described in this manual.
- Always wear personal protection equipment; helmet, boots, gloves and safety glasses.
- Never operate a hinged column during high wind speeds.
- Be aware of a possible high-top weight before lowering.
- Make sure that the column is dry or wear dry gloves before lowering.
- Remove all obstacles from your walk path before lowering.
- Never throw the wedge onto the ground, it may get damaged.
- Take a tool with you to support the column when it's lowered.
- A site-specific risk assessment must be completed to determine the safest method of raising or lowering the column.
- For low hinged columns higher than 6m, Pole Products strongly recommends making use of the Raise & Lowering Tool. The generated load as result of the top weight and both weight and length of the top section can be too heavy for a single person to raise and lower!
- At first installation and during each maintenance, check that the 4x (3x for D145mm column) internal captive M12 bolts are torque to **50Nm**.
- At first installation and during every operation, check that the hinge pin is fully tightened in place before replacing the wedge!
- If the positioning and weight of the equipment mounted on the column is within the permitted safe working load, the pole may be raised and/or lowered manually. If the load is greater than the permitted load for one person to operate on the column or there is any doubt about the load, the Raise & Lowering Tool must be used, see manual: MEN03.28.006 Manual R&L tool.

Disclaimer

Despite the careful development and compilation of this installation manual, it is possible that incorrect or incomplete information is included. Hydro is not liable for any damage, directly or indirectly, related to the use of the information in this manual.

Operation of the HiLo column with wedge

Required tools:

- Ratchet wrench with nut 12 mm and extension
- Eye bolt (supplied)
- Door key
- Support

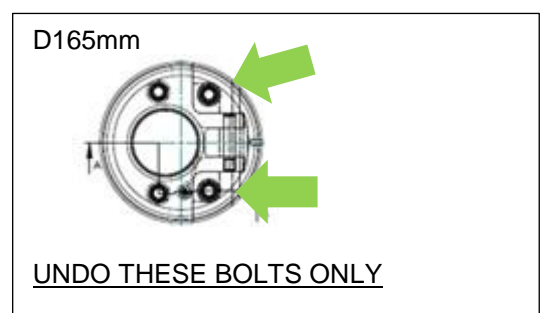
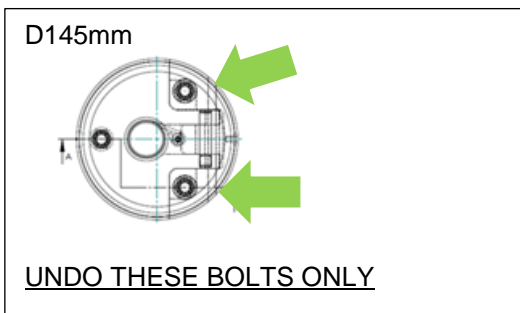


1. Unlock both door locks with the door key. Take the door out of the column.



2. Use the ratchet wrench and extension bar to undo the captive bolts that secure the “wedge” in place. **UNDO THESE BOLTS ONLY.** Leave the bolt(s) securing the hinge in place.

There are two bolt configurations, depending on the diameter of the pole; 145mm diameter poles have three bolts in total; 165mm diameter poles have four bolts in total.



- Screw the M6 eye bolt into the hole on the outside of the wedge. Place your other hand 'high' onto the column and pull out the wedge.

Note: If the wedge sticks, free it by pushing against the top section of the column while simultaneously pulling the wedge.



- Check to ensure the hinge pin is in place.**

 - If the hinge pin is in place (see detail 2 in figure 1), then replace the wedge!
When the wedge is in place, then you can undo the remaining internal captive M12 hexagon (10mm) socket head cap screws, with a ratchet, hexagon key or other appropriate tool (H12 Hex Sockets or H12 Hex Drive Socket).
 - If the hinge pin is missing, replace the wedge, tighten all captive bolts to 50Nm, replace the door, remove the demountable tool and record the details from the CE label above the door. Report incident of missing hinge pin directly to the supplier.

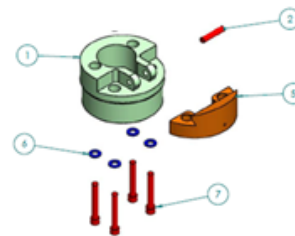


Figure 1



Note: The M12 bolts in the column are captive to prevent complete removal.

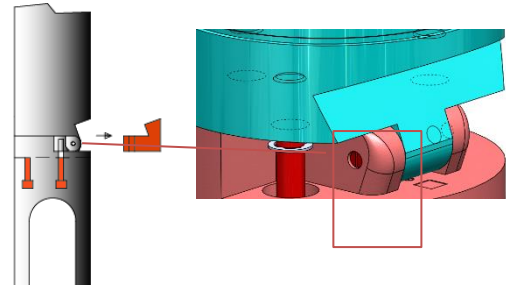
- Hook the eye bolt with wedge onto your belt or place it on a toolbox and place your second hand on the column.
- Gently lower the column. Carefully walk backwards during lowering, with both hands high onto the column to decrease the top weight.

Note: The hinge mechanism does not support the upper column part when lowered. Support it with a chock or another proper mode of support.



7. Before raising the column make sure to visually check the hinge pin.
Make sure that the pin is fully in place!

Use a flat screw driver if the pin needs to be tightened.



8. Once the work is completed, Steps 1 to 5 should be carried out in reverse order. Make sure that the 4x (3x for D145mm column) internal captive M12 bolts are torqued to **50Nm**.

Short schematic overview

